

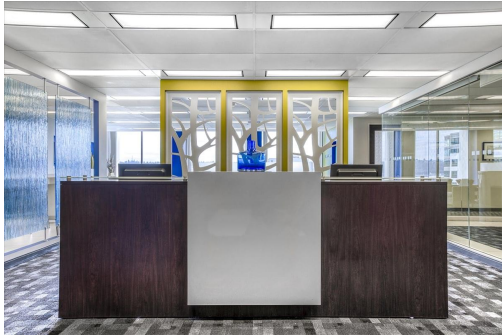
Serviced Office Space USA

1201 Pacific Avenue

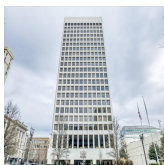
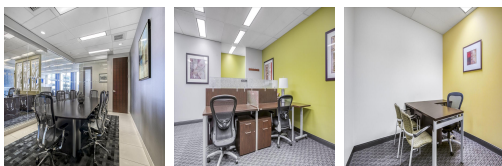
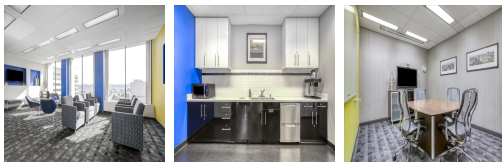
Tacoma 98402



This fully functional and exceptionally well equipped business center installation is very close to all amenities and the very best of the locality's public services and sites of interest, including the University of Washington, Tacoma, the Greater Tacoma Convention and Trade Center, and occupies a prominent location between 12th and 13th streets. The closeness of the I-705 and SR-509 freeways make the center's location convenient for access to and from this vital business arena. The area is also easily accessible from the wider region.



This center is ideally placed in a landmark building in the heart of the downtown business community. Well-known investment and retail banks and insurance companies, IT and hi-tech firms are anchored in this dynamic financial district. Tacoma is a commercial hotspot and boasts excellent transport connections, a bustling container port, and a well-educated workforce. The center enjoys breathtaking panoramic views of Puget Sound, including the mountains, bay, waterway and the building's two-level courtyard and fountain. Inside, the 25-story building offers a Class A environment, including a prestige-enhancing wood-paneled lobby.



transport links

Underground	N/A
Train Station	Tacoma Dome Station
Road Link	N/A
Airport	Seattle-Tacoma International Airport

Virtual Office

- **Price** : \$119 pcm
- **Min Price** : \$119 pcm
- **Min Term** : 24 mnths
- **Max Term** : 999 mnths